

“
EXCELLENCE
FOR A STRONGER
TOMORROW”





COMPANY OVERVIEW

Kanhaiyya Heavy Engineering Private Limited (KHEPL), formerly known as Triumph Technocrat, is a leading manufacturer and turnkey solution provider for pre-engineered steel buildings, structural steel solutions, cold storage facilities, MEP services, and integrated industrial infrastructure across India. For over a decade, we have delivered world-class steel structures known for precision, speed, and reliability.

Our manufacturing facility is spread over 75000 sq. ft. land in Gatewadi near Supa-Parner Industrial Park (Phase-2), Ahilyanagar-Pune Highway, it is equipped with automated CNC machines and advanced equipment. In-house design and detailing teams use industry-leading software to ensure excellence at every stage.

OUR PHILOSOPHY

We are committed to understanding customer expectations, delivering superior products at competitive prices, and building open, long-term partnerships.

Senior management's direct involvement fosters trust and ensures quality standards while driving service innovation.

Directors' Message

With over a decade of expertise in PEB, ERP-integrated operations, and precision engineering, we provide turnkey solutions that consistently exceed expectations.

Mr. Libesh M. Nair
Mr. Suresh R. Pathare



Mission

To foster growth through passion and excellence, consistently creating value for all stakeholders.



Vision

To be the preferred choice for construction services, driving profitable growth through value-added solutions.



Core Values

Integrity, Customer Relationships, Ethics, Quality, Innovation, Cost Optimization, Empowerment.



PROJECT SCALE

100+
Clients

300+
Projects

8+ Years
of Industry

100+
Strong Workforce





Quality, Safety & Environment Commitment

At **KHEPL**, quality, safety, and environmental responsibility are integral to our operations.

We comply with **ISO 9001:2015** and **OHSAS 18001:2007**, ensuring our products and services meet the highest standards.

OUR COMMITMENTS

- Full compliance with ISO and OHSAS standards.
- Comprehensive Health, Safety & Environment (HSE) policies.
- High-quality installations meeting all requirements.
- Continuous staff training and skill development.
- Culture of "Getting it right at the first time."
- Strict control over supply, installation, and execution.
- Regular audits and proactive corrective actions.
- Accident prevention and workforce safety monitoring.
- Preventive maintenance for consistent performance.
- Adherence to all statutory and regulatory norms.
- Every employee accountable for quality, safety, and environmental standards.

OUR SERVICES



Pre-Engineered Building (PEB) Manufacturing

We design, fabricate, and assemble pre-engineered buildings off-site for quick installation. Benefits include cost efficiency, faster timelines, flexible designs, superior durability, minimal waste, aesthetic appeal, predictable costs, and low maintenance.



Turnkey Industrial Projects

Complete project management from planning, cost estimation, and approvals to procurement, quality inspection, skilled installation, commissioning, performance monitoring, and long-term maintenance.



Structural Steel Buildings

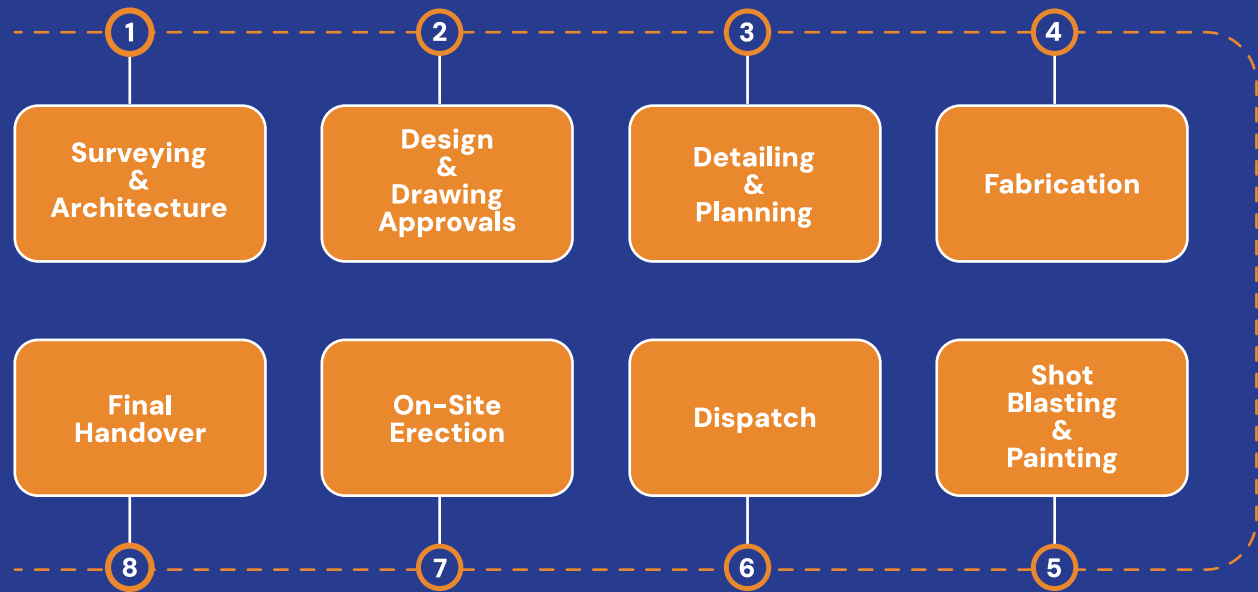
Solutions with diverse shapes and cross-sections, clear spans up to 60m, modular expansion, 10–12 week completion, reduced labor, and eco-friendly, resource-efficient construction without water or sand usage.



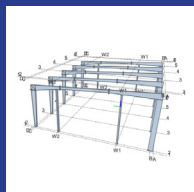
Cold Storage Solutions

Refrigerated (2°C to 8°C) and frozen (-18°C to -22°C) storage for produce, dairy, pharmaceuticals, and frozen foods. Includes 24/7 monitoring, inventory management, and logistics support.

PROCESS FLOW



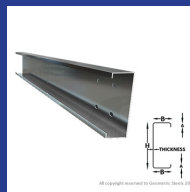
ELEMENTS OF PEB



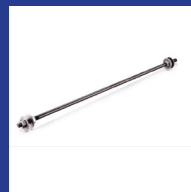
PEB Structure



Z Purlin



C Purlin



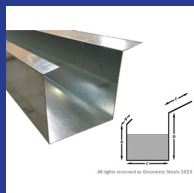
Sag Rod



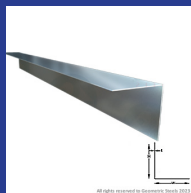
Anchor Bolts



Rod Bracing



Eaves Gutter



Sheeting Angle



Industrial Louvers



Sheet Metal Louvers



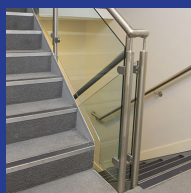
Ridge Vent



Industrial Staircase



Industrial Staircases With Tiles



Steel Staircase Public Building



Mezzanine Floor With Gratings



Mezzanine RC Deck Slab

MANUFACTURING INFRASTRUCTURE

Our advanced facility, spread over a vast area, is fully equipped to meet bulk and urgent demands efficiently. Specialized units with ultra-modern machinery ensure organized workflows, high production rates, and superior product quality. Laboratory and production units, supervised by qualified professionals, ensure compliance with industry regulations.

KHEPL's top-tier equipment includes CNC machines, H Beam saw welding machine, purlin extrusion machine, sheet extrusion machine, shearing machine, and bending machines. Overhead crane facilities in each work center boost production rates and handle complex lifting needs with precision and safety. Advanced load-lifting systems — including dual hoists, grabbers, magnets, and suction cups — deliver efficient, reliable material handling. A mobile crane supports large-scale production execution.

Our shot blasting and painting facilities cater to heavy, medium, and light steel products, meeting Indian and international standards. Both machine and manual blasting are performed in covered, environmentally responsible areas.



CNC Machine



Saw Welding Machine



Purlin Extrusion Machine



Sheeting Extrusion Machine



Sheet Crimping Machine



Shot Blasting Machine

PROJECTS



Kanhaiyya Agro

Gatewadi, Parner

Project

Cattle Feed Manufacturing Unit

Built-Up Area

1,50,000 sq.ft.



Yashoda Industries

Ahmednagar

Project

Manufacturing Unit

Built-Up Area

37,500 sq.ft.



Galco Aluminium Extrusions

MIDC, Ahmednagar

Project

Industrial Shed

Built-Up Area

77,500 sq.ft.

DC Industries (Leeba Construction)

MIDC, Ahmednagar

Project

Warehouse & Logistics Park

Built-Up Area

95,000 sq.ft.



PROJECTS



Sula Wines

Nashik (Samarth Construction)

Project

Winery Tank Unit

Built-Up Area

8,000 sq.ft.



Polymedicure

Palwal, Delhi

Project

Pharmaceutical Production Unit

Built-Up Area

80,000 sq.ft.



Public infrastructure project

Santa Monica Jetty Terminal – Panjim, Goa
(True Build Engineering LLP)

Project

Public Building (Terminal)

Built-Up Area

78,000 sq.ft.



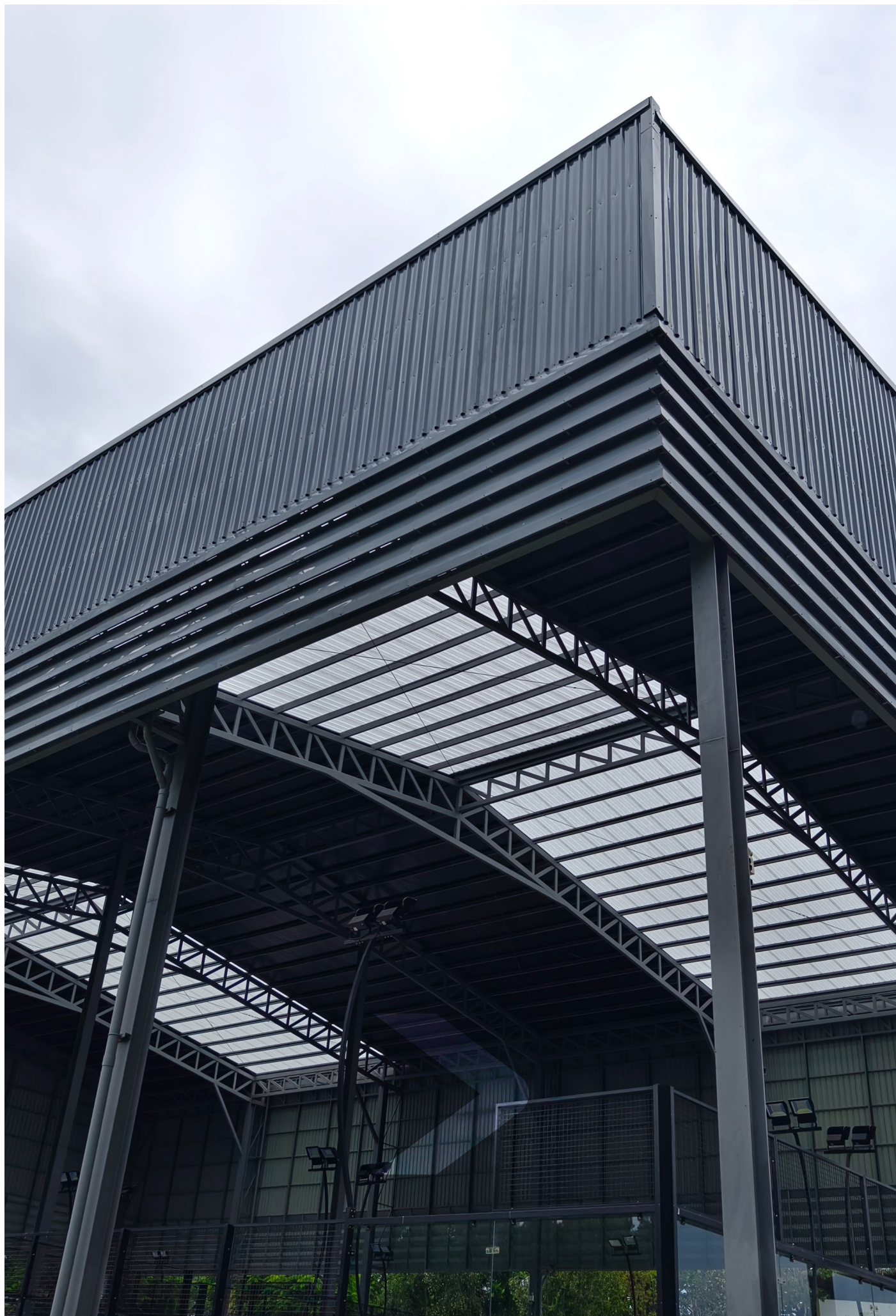
Venkateshwara Poultry Breeding Farms PVT. LTD., Miraj

Project

Feedmill Plant Unit

Built-Up Area

60,000 sq.ft.





📍 Vadner Gatewadi Road, Gatewadi, Parner,
Ahilyanagar, Maharashtra – 414302

Landmark: Supa Parner Industrial Park (Phase-2), Ahilyanagar-Pune Highway

☎ 77 220 50001

✉ sales@khepl.in

🌐 www.khepl.in